



# CAPITOL INSIDER

Advocate for Oregon Electric Cooperatives

A roundup of state legislative news from Power of Community.

## Co-ops Seek an Updated Profile

*Oregon's renewable portfolio standard doesn't account for energy-intensive data centers*

The Oregon Legislature meets this month, and while the session is a mere 29 days—a virtual sprint compared with the marathon-like six-months of legislative activity we will see in 2013—it is important nonetheless.

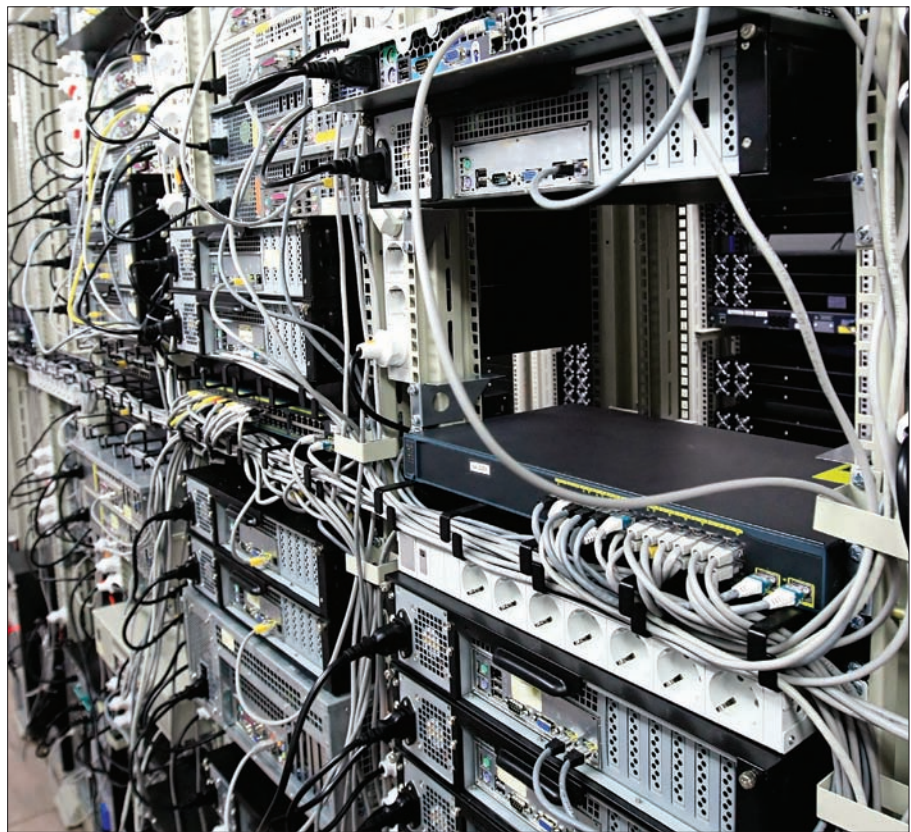
One issue Central Electric and other electric cooperative leaders will discuss with legislators is an unintended consequence of the state's renewable portfolio standard (RPS) law passed in 2007. The RPS requires utilities to supply a portion of their electricity from renewable resources, such as wind or solar.

Curiously, generation from the hydroelectric dams marketed by the Bonneville Power Administration does not count as a renewable resource.

Depending on their size, electric cooperatives have to comply with the law by having 5 percent or 10 percent of their electricity generated from qualified renewable resources by 2025. Because electric cooperatives have a much smaller percentage of the state's energy load, legislators decided they—including Central Electric—did not have to meet the 25 percent renewable threshold for the state's largest utilities, PacifiCorp and Portland General Electric.

That might be changing.

Large data centers—like Facebook and Google—are locating in Oregon. We have several such facilities interested in constructing facilities in CEC's service area near Prineville. As large users of electricity, these data centers could have the unintended consequence of pushing Central Electric into the same category of the RPS as PacifiCorp and PGE.



**Large data centers located in rural Oregon significantly change the dynamics of electricity load management for small electric cooperatives.**

© Joyfull/Dreamstime.com

We do not believe this is a fair or reasonable application of the law. These large utilities have a much larger base of consumers to spread the additional costs of renewable energy. The Legislature did not envision the impact of giant data centers on the RPS. We and Oregon's other electric cooperatives now are asking the Legislature to explore ways to protect our consumers.

We are proud of our record on renewable energy and for offering reliable, affordable power. We also know laws are not perfect. Just like someone's profile on Facebook, they occasionally need a little updating. ■

*Provided by Central Electric Cooperative for its Power of Community members. Go to [www.ccc.coop/poc/poc\\_overview.html](http://www.ccc.coop/poc/poc_overview.html) to learn more or sign up.*